



# FURTHER SIGNIFICANT DRILLING RESULTS AT O CAPITÃO GOLD PROJECT JV (50/50)

## Corporate Information

ASX Code	CDG
Quoted shares	111.2 million
Total shares	157.3million
Unlisted options (20c)	34.4 million
Unlisted options (\$18)	116,661

## Board and Management

Chairman - Donald C. Bailey
Managing Director - David Mendelawitz
Finance Director - Aaron Finlay
Non-Executive Director - Jim Williams
Non-Executive Director – Russell Scrimshaw

## Contact

### Head Office

Cleveland Mining Company Ltd.

1/387 Hay Street

Subiaco WA 6008

T: +61 (08) 9381 3391

F: +61 (08) 9382 1186

E: [info@clevelandmining.com.au](mailto:info@clevelandmining.com.au)

### Investor & Media Enquiries

T: +61 417 18 1990

E: [investors@clevelandmining.com.au](mailto:investors@clevelandmining.com.au)

[www.clevelandmining.com.au](http://www.clevelandmining.com.au)

ACN: 122711880

## HIGHLIGHTS

- Significant drilling results continue at Dona Maria target
- New exploration lease application submitted
- Resource definition drilling to be completed by mid 2012
- Economic scoping study to be completed by late 2012 for a proposed start of mining in early 2013
- Shared processing facility with the nearby Premier Gold Project should facilitate fast-tracked development at O Capitão

---

**Perth, W.A., December 1<sup>st</sup>, 2011:** Cleveland Mining Company Ltd. (ASX: CDG) is pleased to announce the latest drilling results from the O Capitão Gold Project JV. The Company has intersected further significant gold-bearing mineralisation at the *Dona Maria* target, which is located less than 10 kilometres from Cleveland's Premier Gold Mine.

Drilling has delineated a 250m strike-length of multiple, stacked, mineralised zones with variable down-hole widths ranging from 1.0m to 17.9m per zone. The geology remains open along strike, presenting further exploration potential.

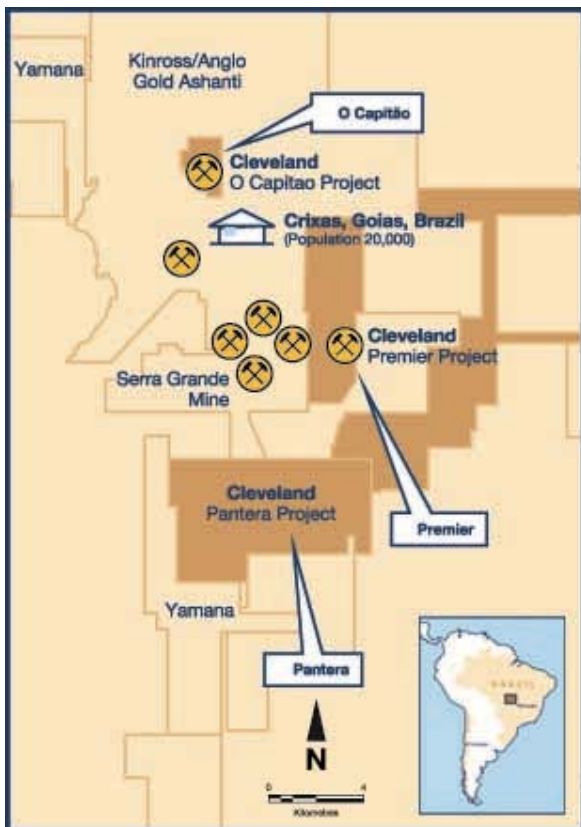
## ASSAY HIGHLIGHTS

- 11.00m @ 14.29 g/t Au from 80.00m to 91.00m (CGPDH00042),  
*including* 0.46m @ 287.90 g/t Au from 89.54m to 90.00m
- 3.40 @ 6.10 g/t Au from 105m to 108.40m (CGPDH00041)
- 17.92m @ 0.54 g/t Au from 44.08m to 62.00m (CGPDH00043)
- 8.94m @ 1.61 g/t Au from 65.17m to 74.11m (CGPDH00043)

## Drilling Summary

The program consisted of seven diamond holes totalling 1,016.92m, targeting the Dona Maria Garimpo. Significant gold-bearing mineralisation was intercepted in six of the seven holes.

The program followed up the mineralised intercepts from previous drilling at Dona Maria. Further drilling is required to test the extension of the mineralisation, as its potential remains open along strike and at depth.



The Dona Maria mineralisation is hosted within different lithologies from those previously identified in the O Capitão project area and occurs in four distinct horizons associated with an increase in sulphides, biotite alteration and quartz veining. The surface expression of the host lithologies has been identified.

### Application for Exploration Lease

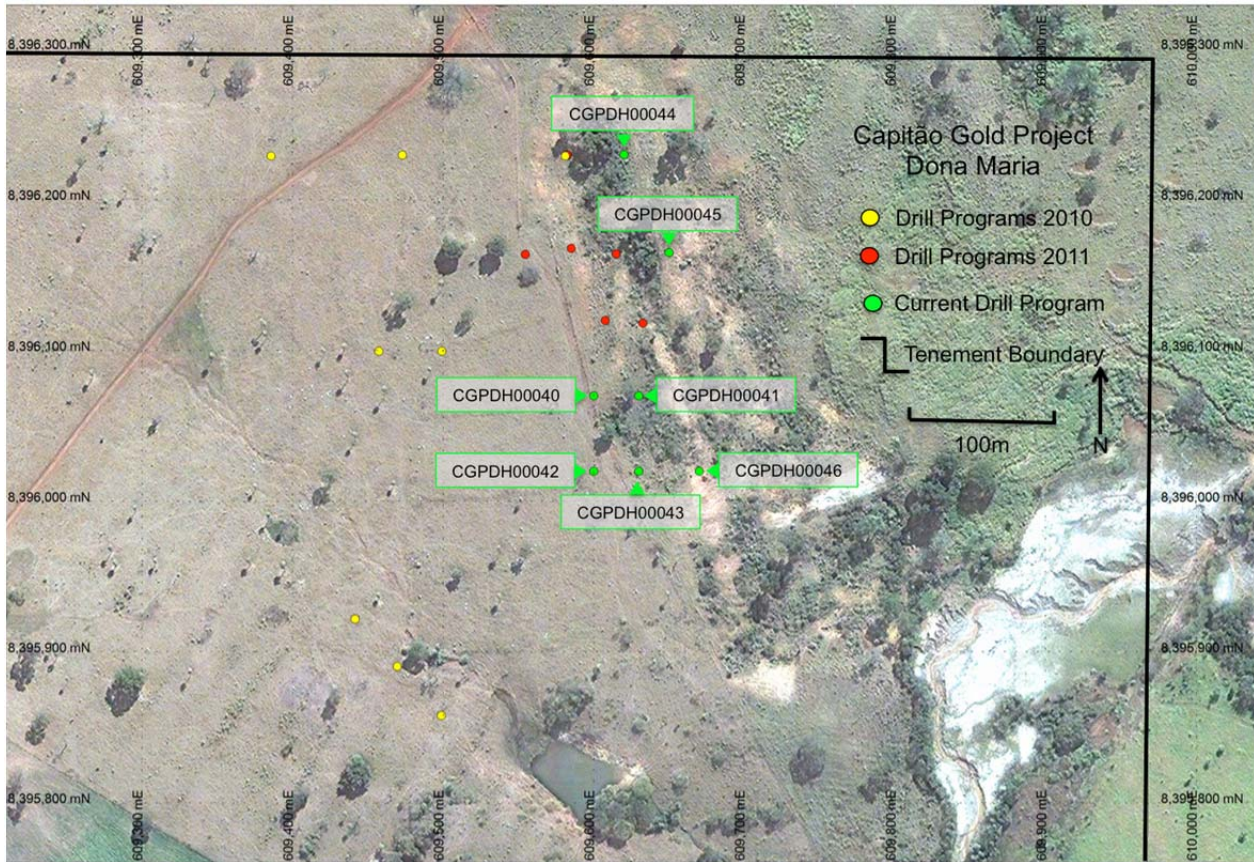
The Company has submitted a new exploration lease application over the Capitão Project under the joint venture entity. Publication of the exploration lease is expected in early 2012.

### Work Plan

Cleveland is planning to commence infill and extensional drilling on the Dona Maria mineralisation in early 2012 with the aim of defining a JORC-compliant Resource in 2012. A scoping study would then be commissioned to investigate the benefits of utilising infrastructure at the

Premier Gold Project as opposed to operating as a stand-alone project, with an intention to fast-track mining commencement.

**DRILL HOLE LOCATIONS**



**Appendix A**
**Table of Significant Assay Results<sup>1</sup>**

BHID	Location <sup>2</sup>			Orientation		From (m)	To (m)	Composite	
	East	North	Elevation	Dip	Azimuth			Interval <sup>3</sup> (m)	<sup>4</sup> Au g/t
CGPDH00040	609603	8396071	421	-70	090	1.00	5.60	4.60	0.92
CGPDH00040	609603	8396071	421	-70	090	86.38	95.23	8.85	0.45
<i>Including</i>						92.70	94.00	1.30	1.14
CGPDH00041	609638	8396070	418	-70	090	42.80	49.00	6.20	1.11
CGPDH00041	609638	8396070	418	-70	090	59.00	60.00	1.00	2.22
CGPDH00041	609638	8396070	418	-70	090	67.00	74.00	7.00	1.11
CGPDH00041	609638	8396070	418	-70	090	95.87	96.18	0.31	1.22
CGPDH00041	609638	8396070	418	-70	090	99.50	100.40	0.90	5.30
CGPDH00041	609638	8396070	418	-70	090	105	108.40	3.40	6.10
CGPDH00042	609603	8396019	421	-70	090	5.00	6.00	1.00	1.94
CGPDH00042	609603	8396019	421	-70	090	80	91	11.00	14.29
<i>Including</i>						86.99	90.00	3.01	50.12
<i>Including</i>						89.54	90	0.46	287.90
CGPDH00043	609637	8396020	417	-70	090	17.06	17.47	0.41	26.00
CGPDH00043	609637	8396020	417	-70	090	44.08	62.00	17.92	0.54
CGPDH00043	609637	8396020	417	-70	090	65.17	74.11	8.94	1.61
CGPDH00043	609637	8396020	417	-70	090	78.58	84.00	5.42	1.24
CGPDH00043	609637	8396020	417	-70	090	94.27	98.55	4.28	0.39
CGPDH00044	609628	8396232	421	-70	090	15.00	22.69	7.69	0.72
CGPDH00044	609628	8396232	421	-70	090	103.83	105.09	1.26	2.66
CGPDH00045	609653	8396166	418	-70	090	94.10	100.47	6.37	0.58
CGPDH00045	609653	8396166	418	-70	090	105.48	106.30	0.82	0.75
CGPDH00046	609673	8396020	412	-70	090	25.08	27.51	2.43	0.66
CGPDH00046	609673	8396020	412	-70	090	37.00	38.63	1.63	1.04
CGPDH00046	609673	8396020	412	-70	090	80.89	81.48	0.59	2.10
CGPDH00046	609673	8396020	412	-70	090	83.36	84.30	0.94	0.70

**Notes:**

<sup>1</sup> Drilling and assay results in the above table are based on down-hole composites. The composites may contain internal dilution as an interval was defined on tenor and geological characteristics (i.e. alteration, veining and mineral species). No upper cut has been applied to the assay results. Composites were reported if the composited grade was greater than 0.30 g/t Au.

<sup>2</sup> Datum – SAD69. Coordinates surveyed by Polígono Topografía e Agrimensura Ltda.

<sup>3</sup> Intervals measure as down the hole intervals.

<sup>4</sup> Assay results are based on half core (NQ, HQ) 30g fire assay with AAS finish.

\*\*\*ends\*\*\*



### **About Cleveland Mining**

Cleveland Mining is an Australian-managed, publicly-listed minerals company squarely focused on developing projects to owner-operate. Cleveland has eight projects, which are located within three distinct geographical hubs:

- 1) The Crixás Hub, Goiás State, central Brazil. Projects: Premier, O Capitão, Baú, Guarinhos, Pantera – Gold-focused
- 2) The Central West Hub, central Chile. Expanding portfolio between La Serena and Santiago – Gold/Copper-focused
- 3) The Amapá Hub, Amapá State, northern Brazil. Projects: Porto Grande and Lebre– Iron ore-focused

The Company's most advanced project is the Premier Gold Project, which is currently being prepared for mining. Cleveland has explored several of its other projects with promising results.

Cleveland has a different approach to project selection, with project economics driving target selection. Geological prospects, local costs and infrastructure are rigorously scrutinised before entering into a project. Projects are chosen according to their potential to generate returns at the bottom of the economic cycle, with Cleveland only operating in areas backed by legislation and government that can provide stable and transparent operating environments.

### **Investor and Media Contact**

Andrew Mendelawitz  
investors@clevelandmining.com.au  
+61 417 181 990

### **Forward-looking Statements**

Forward-looking statements can be identified by the use of terminology such as 'intend', 'aim', 'project', 'anticipate', 'estimate', 'plan', 'believe', 'expect', 'may', 'should', 'will', 'continue' or similar words. These statements discuss future expectations concerning the results of operations or financial condition, or provide other forward looking statements. These forward looking statements are not guarantees or predictions of future performance, and involve known and unknown risks, uncertainties and other factors, many of which are beyond our control, and which may cause actual results to differ materially from those expressed in the statements contained in this ASX update. Readers are cautioned not to put undue reliance on forward looking statements.

### **Competent Person's Statement**

The information in this report that relates to Exploration Results, Mineral Resources or Ore Reserves is based on information compiled by Aaron Tomsett, who is a Member of The Australian Institute of Geoscientists. Mr Tomsett has sufficient experience which is relevant to the style of mineralisation and type of deposit under consideration and to the activity which he is undertaking to qualify as a Competent Person as defined in the 2004 Edition of the 'Australasian Code for Reporting of Exploration Results, Mineral Resources and Ore Reserves. Mr Tomsett consents to the inclusion of the matters based on his information in the form and context in which it appears. Mr Tomsett is employed by Cleveland Mining Company Ltd.